



Arctic scenarios workshop

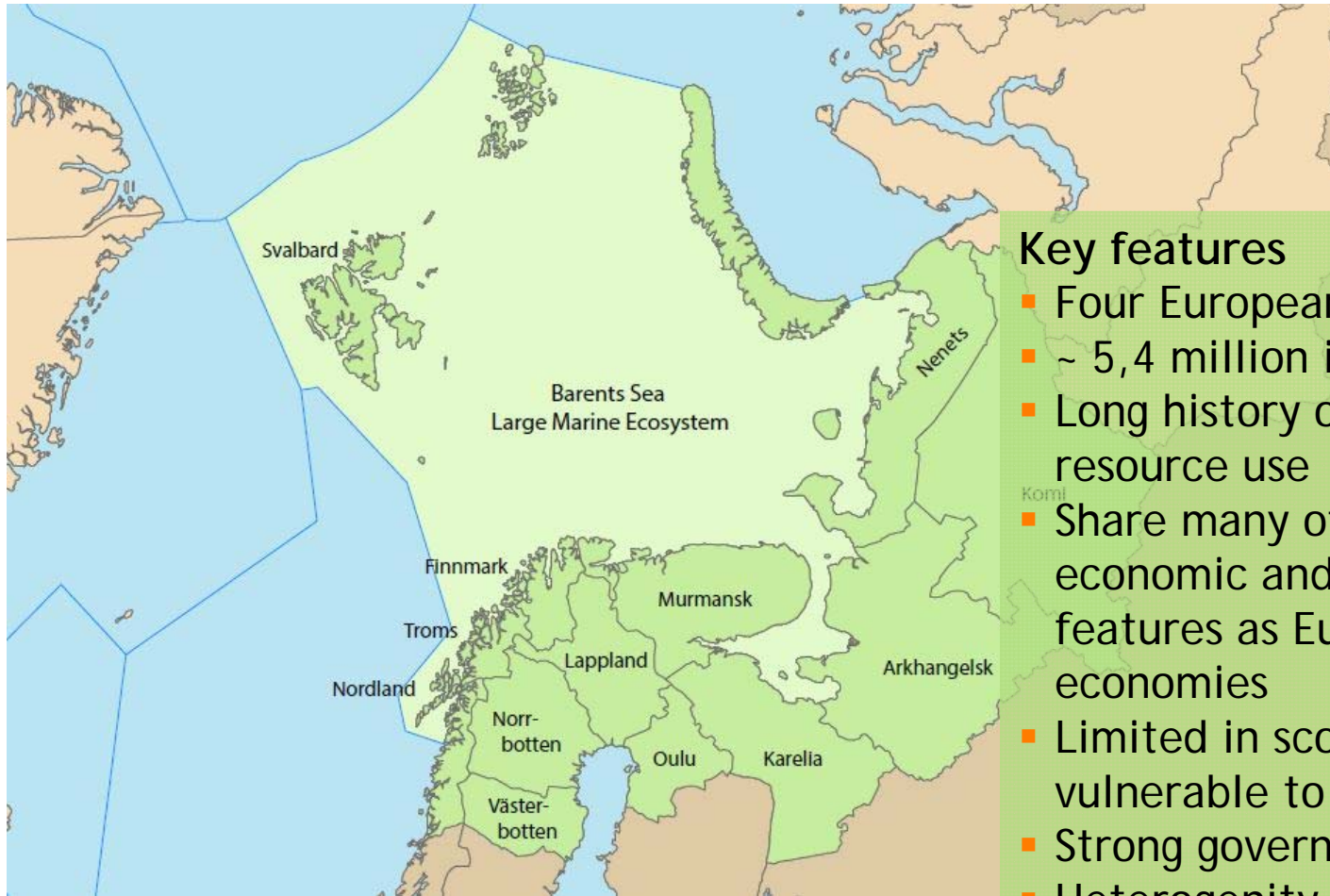
Characteristics of the Barents Region and need for scenarios

Marianne Kroglund, co-chair

Barents Regional Implementation Team



Barents region – key features



Key features

- Four European countries
- ~ 5,4 million inhabitants
- Long history of natural resource use
- Share many of the same economic and industrial features as European economies
- Limited in scope and vulnerable to change
- Strong governance structures
- Heterogeneity

Population centres in Barents region



Source: UNEP/GRID-Arendal (2005)

Human activities in the region

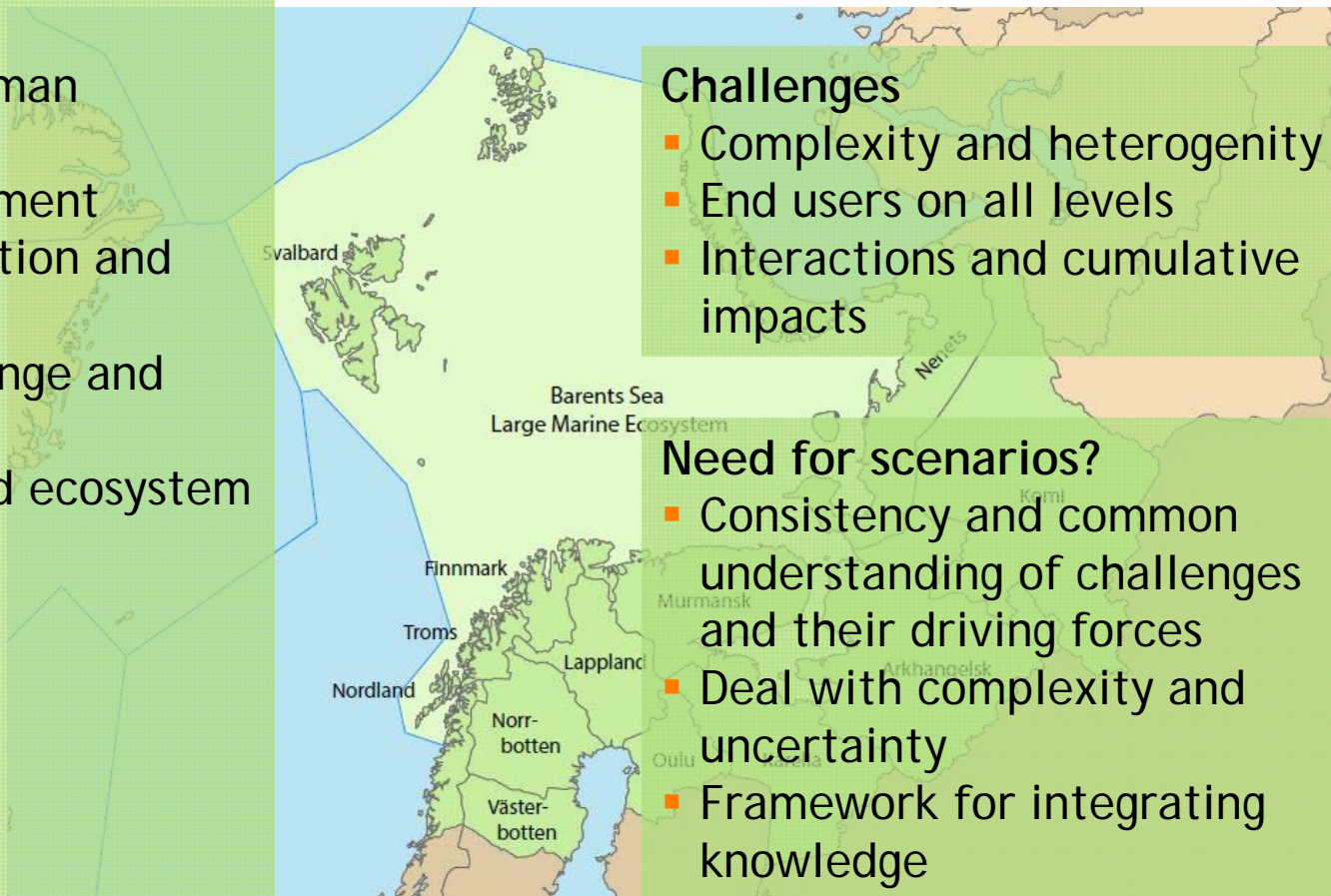
- Nature-based industries
 - Fisheries
 - Forestry
 - Aquaculture
 - Agriculture
- Indigenous peoples traditional livelihoods and subsistence
 - Fishing
 - Reindeer herding
 - Hunting and gathering
 - Subsistence and nature use
- Resource extraction
 - Oil & gas
 - Mining
 - Related infrastructure and services
- Other industries, sectors and livelihoods
 - Transport, shipping
 - Energy sector
 - Tourism
 - Infrastructure, service sector



Key elements for scenarios

Key elements

- Climate change
- Population and human development
- Economic development
- Resource consumption and constraints
- Socio-political change and geopolitical issues
- Natural capital and ecosystem services
- Food security
- Human health
- Land use
- Energy use
- Technology
- Etc.



Challenges

- Complexity and heterogeneity
- End users on all levels
- Interactions and cumulative impacts

Need for scenarios?

- Consistency and common understanding of challenges and their driving forces
- Deal with complexity and uncertainty
- Framework for integrating knowledge
- Illustrate alternative futures

Barents regional report -- draft outline

- Ch. 1 Introduction
- Ch. 2 Stakeholder regional perspective
- Ch. 3 General Description of the region
- Ch. 4 Global drivers and change
- Ch. 5 Regional drivers and change
- Ch. 6 Impact assessment
- Ch. 7 Resilience
- Ch. 8 Arctic future scenarios
- Ch. 9 Adaptation options
- Ch.10 Knowledge gaps



AACA project overview

